

SECTION VIEW

BAFFLE IS A SEPARATE
POUR THAN VAULT

REINFORCEMENT:
#4 REBAR @ 12" O.C.E.W.,
CENTERED

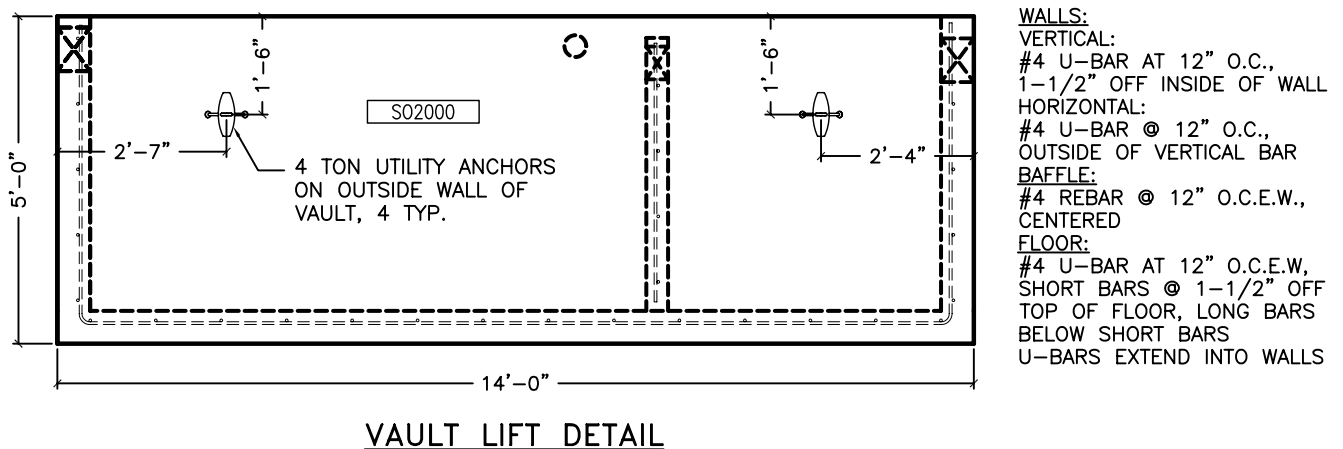
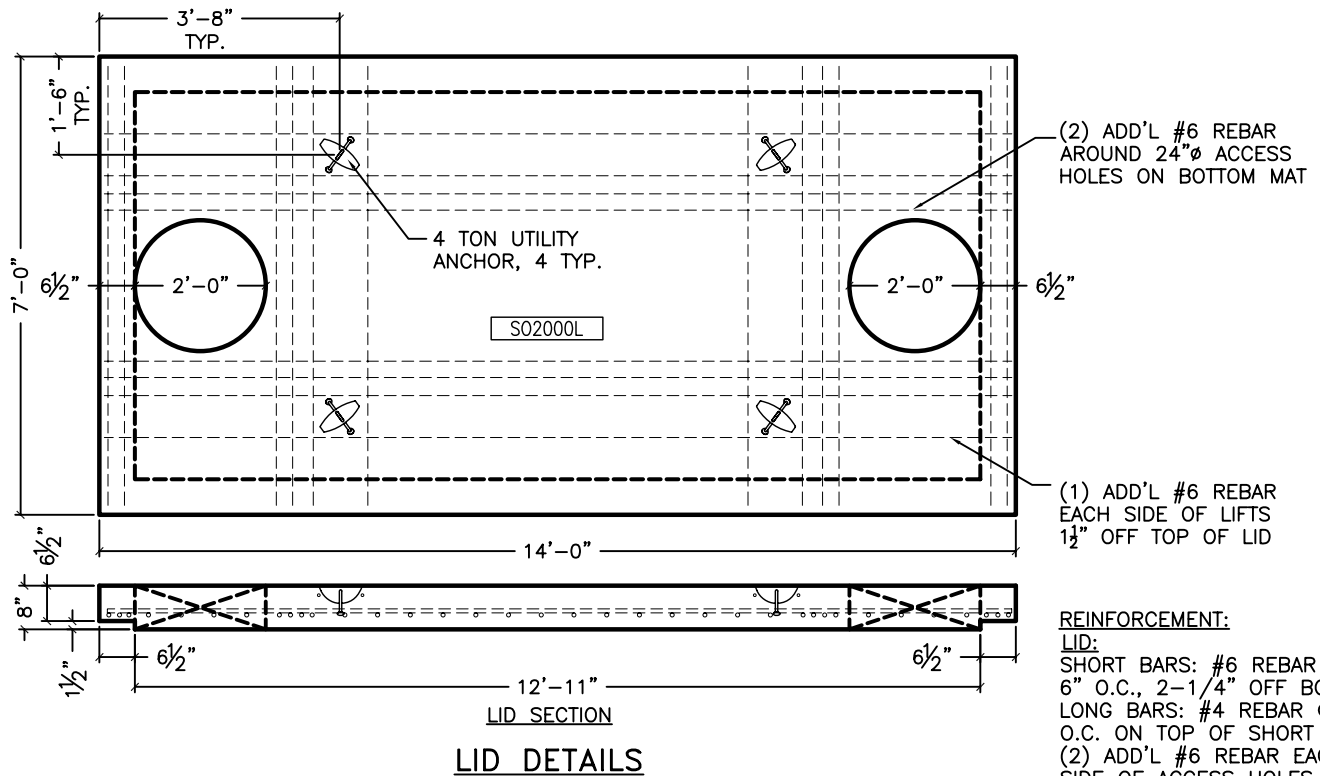
WEIGHT/CONCRETE:
1,302 LBS/0.32 CY

04/15/09

COLORADO PRECAST CONCRETE, Inc.
1820 E. HIGHWAY 402, LOVELAND, CO 80537
(970) 669-0535 FAX (970) 669-0674
www.coloprecast.com



ITEM NAME:
**2000 GALLON SAND & OIL INTERCEPTOR
BAFFLE**



04/15/09

COLORADO PRECAST CONCRETE, Inc.
1820 E. HIGHWAY 402, LOVELAND, CO 80537
(970) 669-0535 FAX (970) 669-0674
www.coloprecast.com



ITEM NAME:

2000 GALLON SAND & OIL INTERCEPTOR
DETAILS