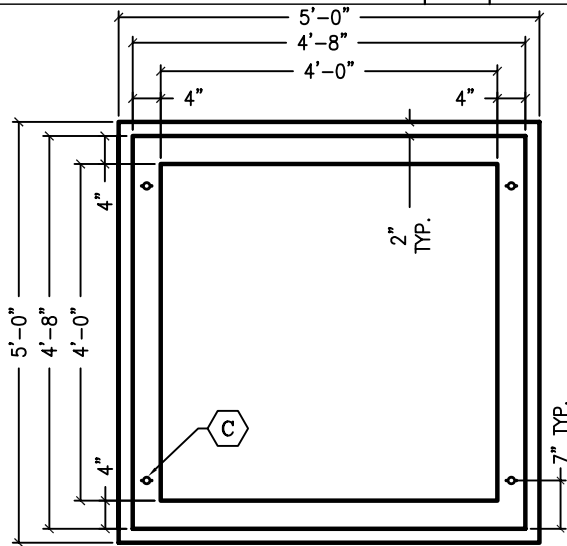


PART NO.	DESCRIPTION	QTY.	OPTION
LIFTPIN1258	P-52 1-TON 2 5/8" SWIFT LIFT	4	ALL
COILSLC0346	3/4" B-16 STRAIGHT COIL LOOP INSERT	4	ALL
ANCHORB518	5/8" THREADED ANCHOR BOLTS	8	
RUB01ROLL	1" BUTYL MASTIC SEALANT ROLL	2	ALL
STOOLR	ROMTEC TOILET ASSEMBLY	1	2
STOOLB	BMS TOILET ASSEMBLY	1	3



VAULT PLAN VIEW

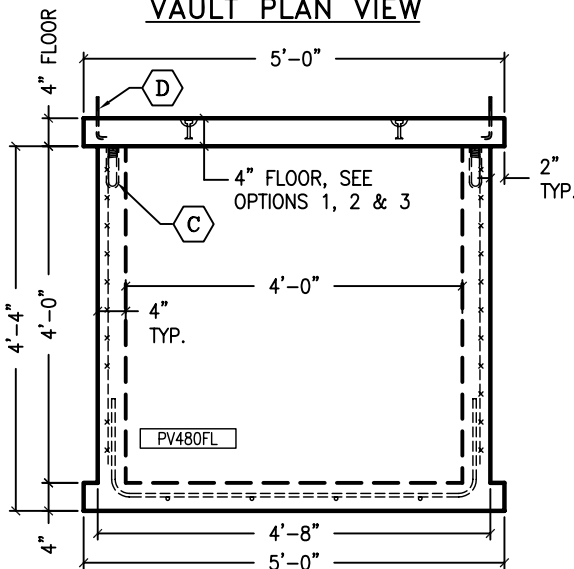
REINFORCEMENT:

FLOOR SLAB:
#4 REBAR @
12" O.C.E.W.,
CENTERED

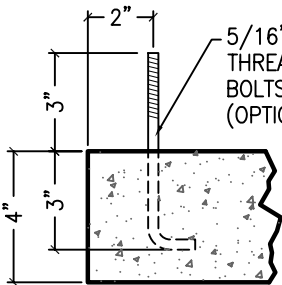
(1) ADD'L #4
REBAR EACH
SIDE OF
BLOCKOUT

VAULT WALLS:
4X4 WWM

VAULT FLOOR:
#4 U-BAR @
12" O.C.E.W.,
CENTERED, 12"
RETURNS



SECTION VIEW

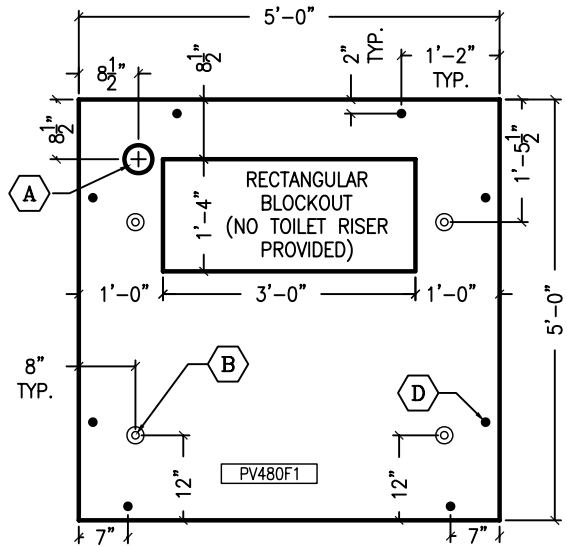


5/16" ϕ
THREADED
BOLTS
(OPTIONAL)

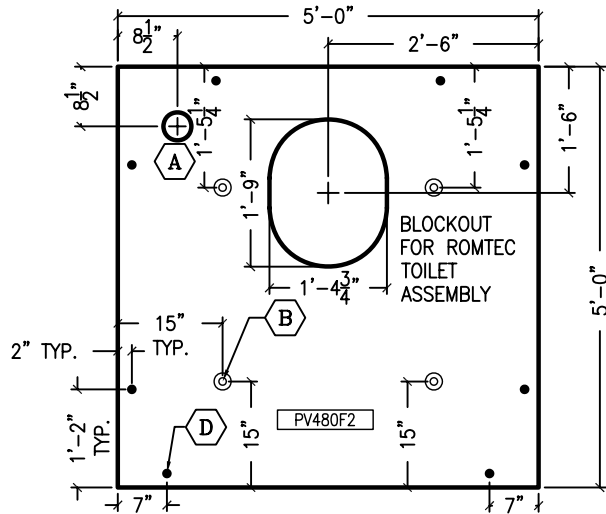
- A** 4" ϕ PVC COUPLER FOR VENT PIPE
- B** P-52 1-TONX2 5/8" SWIFT LIFTS CAST INTO TOP OF FLOOR OR INSIDE FACE OF WALL
- C** 3/4"x6" B-16 STRAIGHT COIL LIFTS CAST INTO TOP OF WALLS
- D** 5/16" ϕ BOLT LOCATION, TYP. (OPTIONAL) FOR ATTACHING WALLS (WALLS BY OTHERS)

WEIGHT/CONCRETE

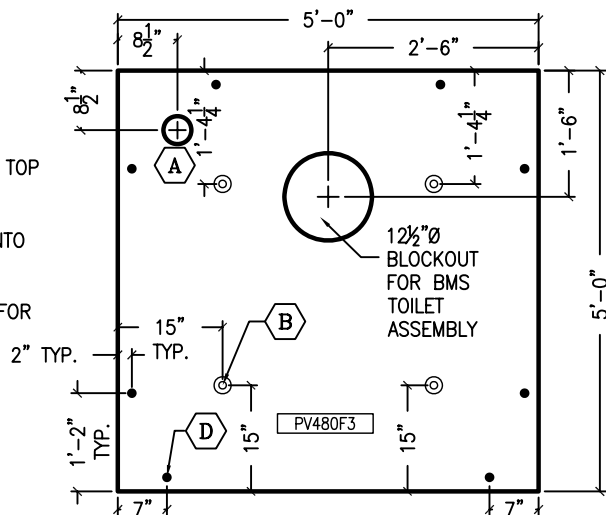
OPTION #1	1,044 LBS	0.26 CY
OPTION #2	1,150 LBS	0.28 CY
OPTION #3	1,201 LBS	0.30 CY
VAULT	4,717 LBS	1.17 CY



PRIVY FLOOR OPTION #1



PRIVY FLOOR OPTION #2



PRIVY FLOOR OPTION #3

03/31/09

COLORADO PRECAST CONCRETE, Inc.

1820 E. HIGHWAY 402, LOVELAND, CO 80537
(970) 669-0535 FAX (970) 669-0674
www.coloprecast.com



ITEM NAME:

**OPTIONS FOR
480 GALLON PRIVY VAULT**