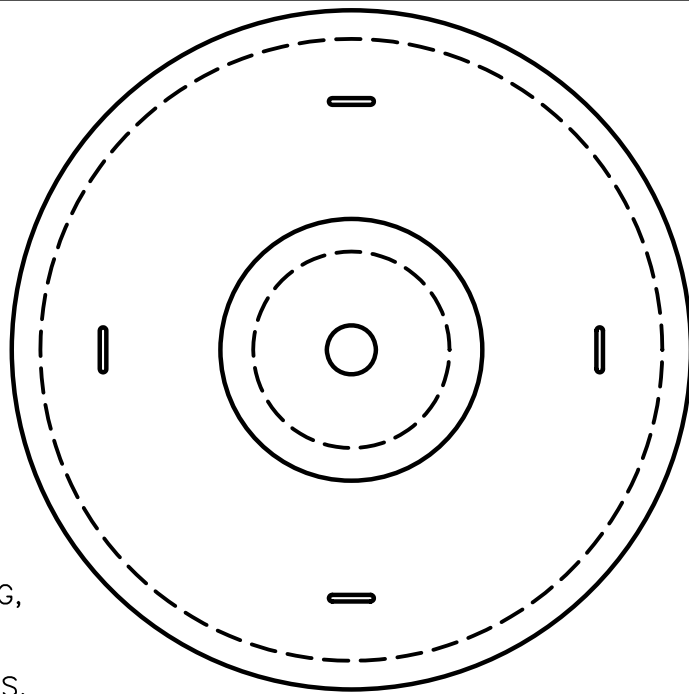


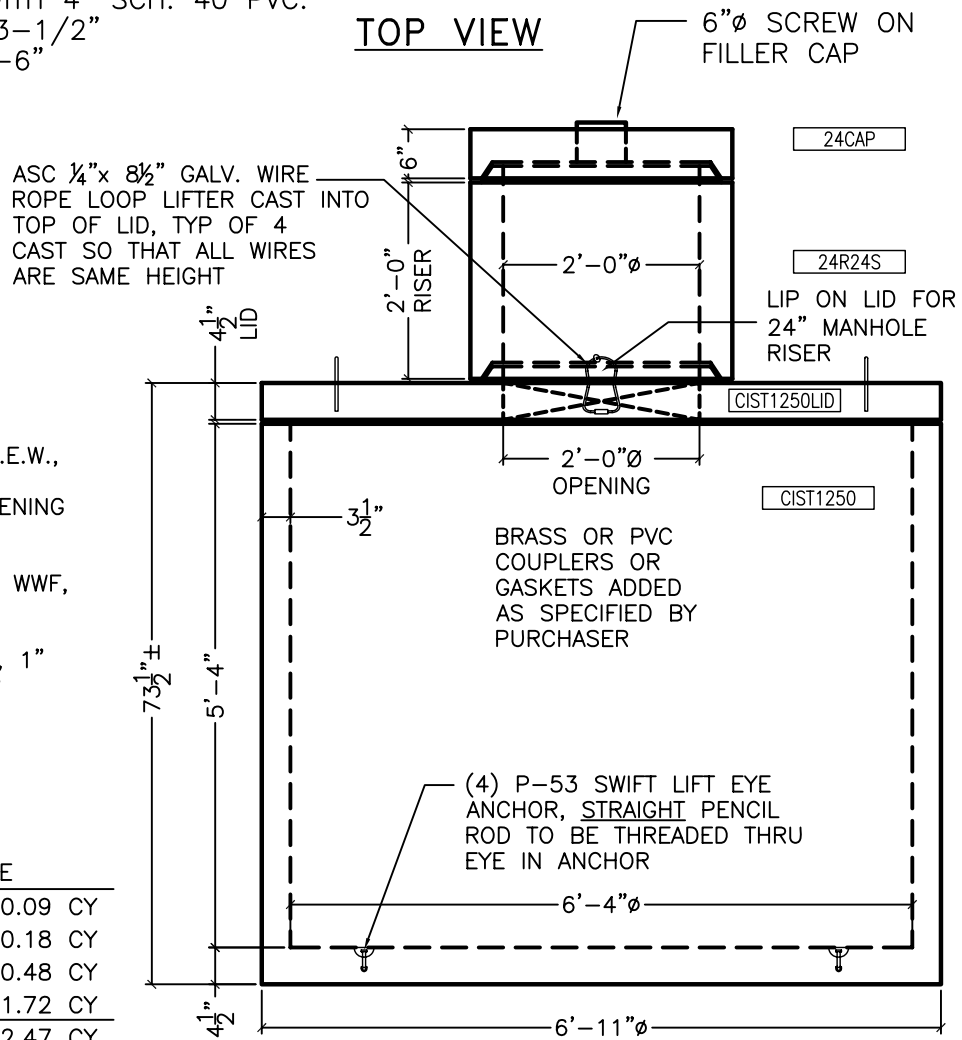
PART NO.	DESCRIPTION	QTY.
LIFTINSERT	MANHOLE LIFT INSERT	4
LIFTPEYE	P-53 1-TON SWIFT LIFT EYE ANCHOR	4
6PVCTP	6" PVC THREADED PLUG	1
6PVCFE	6" PVC FEMALE ADAPTER	1
LIFTWRL14	1/4"x8 1/2" GALV. WIRE ROPE LIFT	4
RUBCSG	1"x14.5" CONSEAL GREEN 14'-6" ROLL	4



TOP VIEW

**NOTES:**

1. CISTERNS ARE MADE TO ORDER, THEREFORE, AT THE TIME OF ORDERING, PIPE SIZES AND LOCATIONS MUST BE SPECIFIED.
2. 2 UNITS ARE USED FOR 2500 GALLONS, TO BE CONNECTED WITH 4" SCH. 40 PVC.
3. WALL THICKNESS IS 3-1/2"
4. HOLE SIZE: 8'-6"x8'-6"



**REINFORCEMENT:**

LID: #5 REBAR @ 7" O.C.E.W., CENTERED (2) ADD'L #5 REBAR EACH SIDE OF OPENING IN MAT  
VAULT:  
WALLS: (2) MATS OF 4x8 WWF, CENTERED  
FLOOR:  
#4 REBAR @ 8" O.C.E.W., 1" CLEAR OF TOP OF FLOOR

	WEIGHT/CONCRETE	
RISER LID	361 LBS	0.09 CY
RISER	733 LBS	0.18 CY
LID	1,937 LBS	0.48 CY
VAULT	6,970 LBS	1.72 CY
TOTAL	10,001 LBS	2.47 CY

04/24/09

**COLORADO PRECAST CONCRETE, Inc.**

1820 E. HIGHWAY 402, LOVELAND, CO 80537  
(970) 669-0535 FAX (970) 669-0674  
www.coloprecast.com



ITEM NAME:

**1250 OR 2500 GALLON CISTERN**