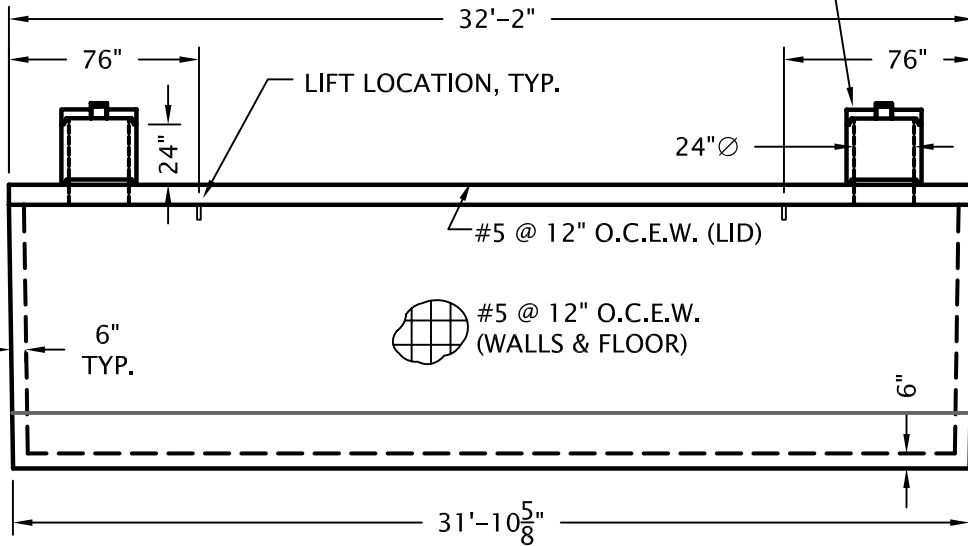
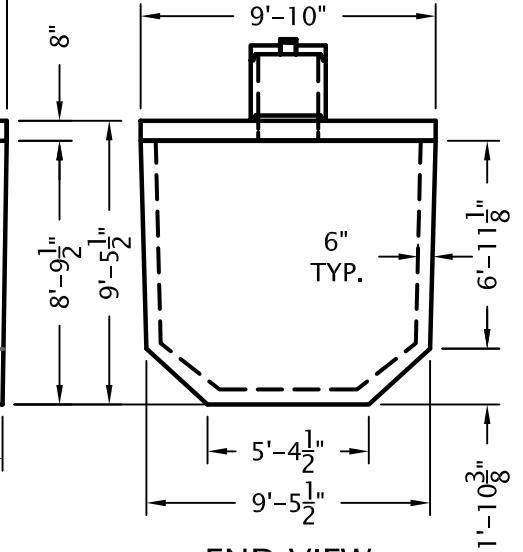


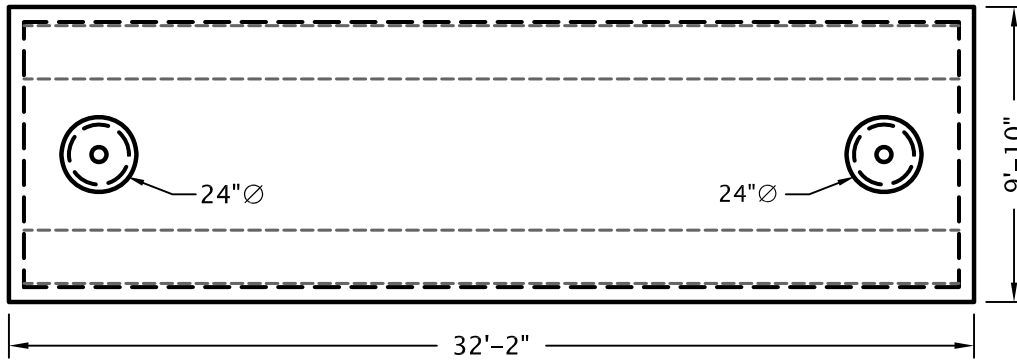
6"Ø SCREW ON FILLER CAP



SIDE VIEW



END VIEW



LID

NOTES:

CISTERNS ARE MADE TO ORDER. THEREFORE, AT THE TIME OF ORDERING, PIPE SIZES AND LOCATIONS MUST BE SPECIFIED

ACTUAL CAPACITY

FULL: 15,929 GALLONS
1' HEAD: 13,877 GALLONS

WEIGHT / MATERIAL:

LID = 31,003 lbs / 207 c.f.
VAULT = 68,072 lbs / 454 c.f.
TOTAL = 99,075 lbs / 661 c.f.

3/02/05

COLORADO PRECAST CONCRETE, Inc.

1820 S.E. 14TH ST., LOVELAND, CO 80537
(970) 669-0535 FAX (970) 669-0674

www.coloprecast.com



ITEM NAME:

15,500 GALLON STORAGE VAULT