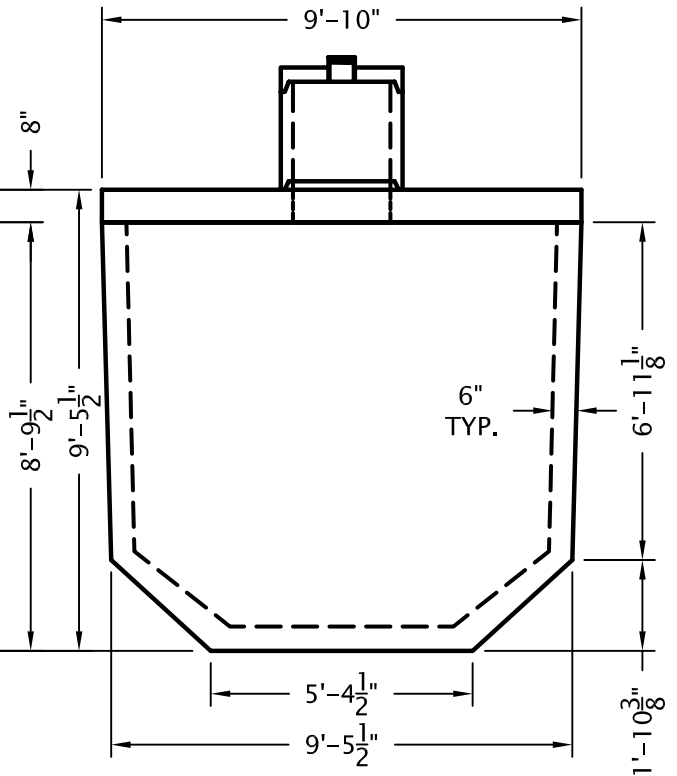
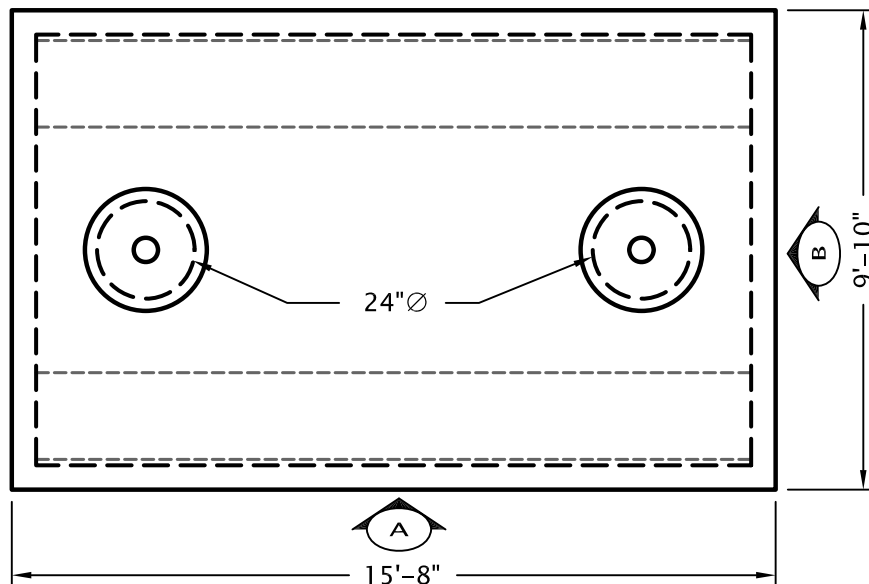


SIDE A



SIDE B



LID

NOTES:

CISTERNS ARE MADE TO ORDER. THEREFORE, AT THE TIME OF ORDERING, PIPE SIZES AND LOCATIONS MUST BE SPECIFIED

ACTUAL CAPACITY

FULL: 7462 GALLONS
1' HEAD: 6496 GALLONS

WEIGHT / MATERIAL:

LID = 14,778 lbs / 99 c.f.
VAULT = 38,271 lbs / 255 c.f.
TOTAL = 53,049 lbs / 354 c.f.

6/26/06

COLORADO PRECAST CONCRETE, Inc.

1820 S.E. 14TH ST., LOVELAND, CO 80537
(970) 669-0535 FAX (970) 669-0674

www.coloprecast.com



ITEM NAME:

7,250 GALLON STORAGE VAULT