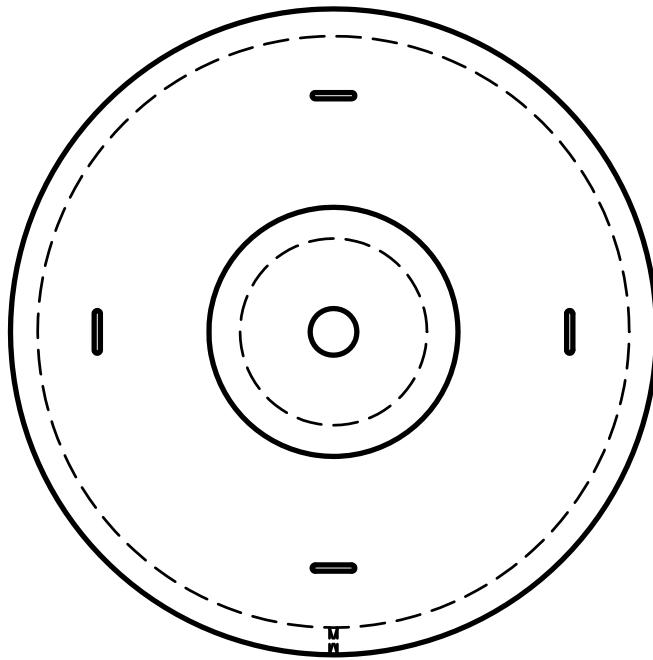


PART NO.	DESCRIPTION	QTY.
LIFTINSERT	MANHOLE LIFT INSERT	4
LIFTPEYE	P-53 1-TON SWIFT LIFT EYE ANCHOR	4
6PVCTP	6" PVC THREADED PLUG	1
6PVCFE	6" PVC FEMALE ADAPTER	1
LIFTWRLL14	1/4"x8 1/2" GALV. WIRE ROPE LIFT	4
RUBCSG	1"x14.5" CONSEAL GREEN 14'-6" ROLL	4
THOROSWSF	THOROSEAL WHITE WATERPROOF COATING (T4002) PER SF	200
1BC	1" BRASS COUPLING FIP TRD	2
1BN	1" BRASS NIPPLE CLOSE	1



TOP VIEW

NOTES:

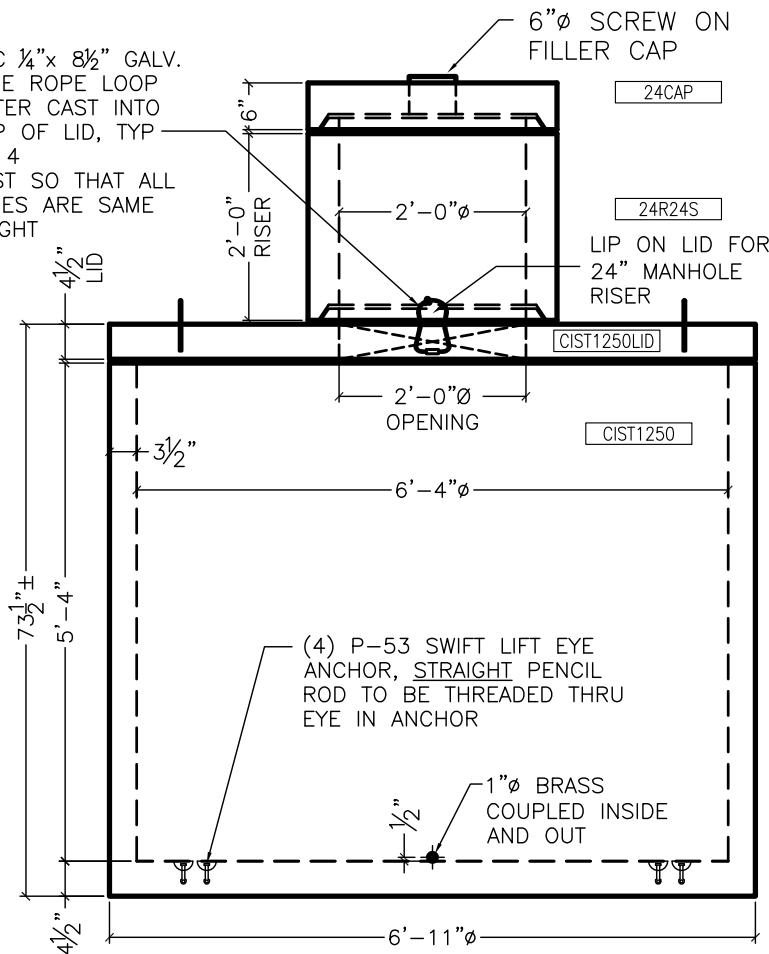
1. CISTERNS ARE MADE TO ORDER, THEREFORE, AT THE TIME OF ORDERING, PIPE SIZES AND LOCATIONS MUST BE SPECIFIED.
2. 2 UNITS ARE USED FOR 2500 GALLONS, TO BE CONNECTED WITH 4" SCH. 40 PVC.
3. WALL THICKNESS IS 3-1/2"
4. HOLE SIZE: 8'-6"x8'-6"

REINFORCEMENT:
SEE PAGE 2

WEIGHT/CONCRETE

RISER LID	361 LBS	0.09 CY
RISER	733 LBS	0.18 CY
LID	1,937 LBS	0.48 CY
VAULT	6,970 LBS	1.72 CY
TOTAL	10,001 LBS	2.47 CY

ASC 1/4"x 8 1/2" GALV. WIRE ROPE LOOP LIFTER CAST INTO TOP OF LID, TYP OF 4 CAST SO THAT ALL WIRES ARE SAME HEIGHT



NOTE:
IT IS THE RESPONSIBILITY OF THE CONTRACTOR TO VERIFY ALL DIMENSIONS AND SPECIFICATIONS

APPROVED BY

DATE

Q:\CATALOG-DRAWINGS\WATER\STORAGE VAULTS\1250 OR 2500 GAL CISTERN 5/4/2015 1:44 PM

COLORADO PRECAST CONCRETE, Inc.

1820 E. HIGHWAY 402, LOVELAND, CO 80537
(970) 669-0535 FAX (970) 669-0674

www.coloprecast.com



ITEM NAME:

1,250 OR 2,500 GALLON CISTERN

1 OF 1