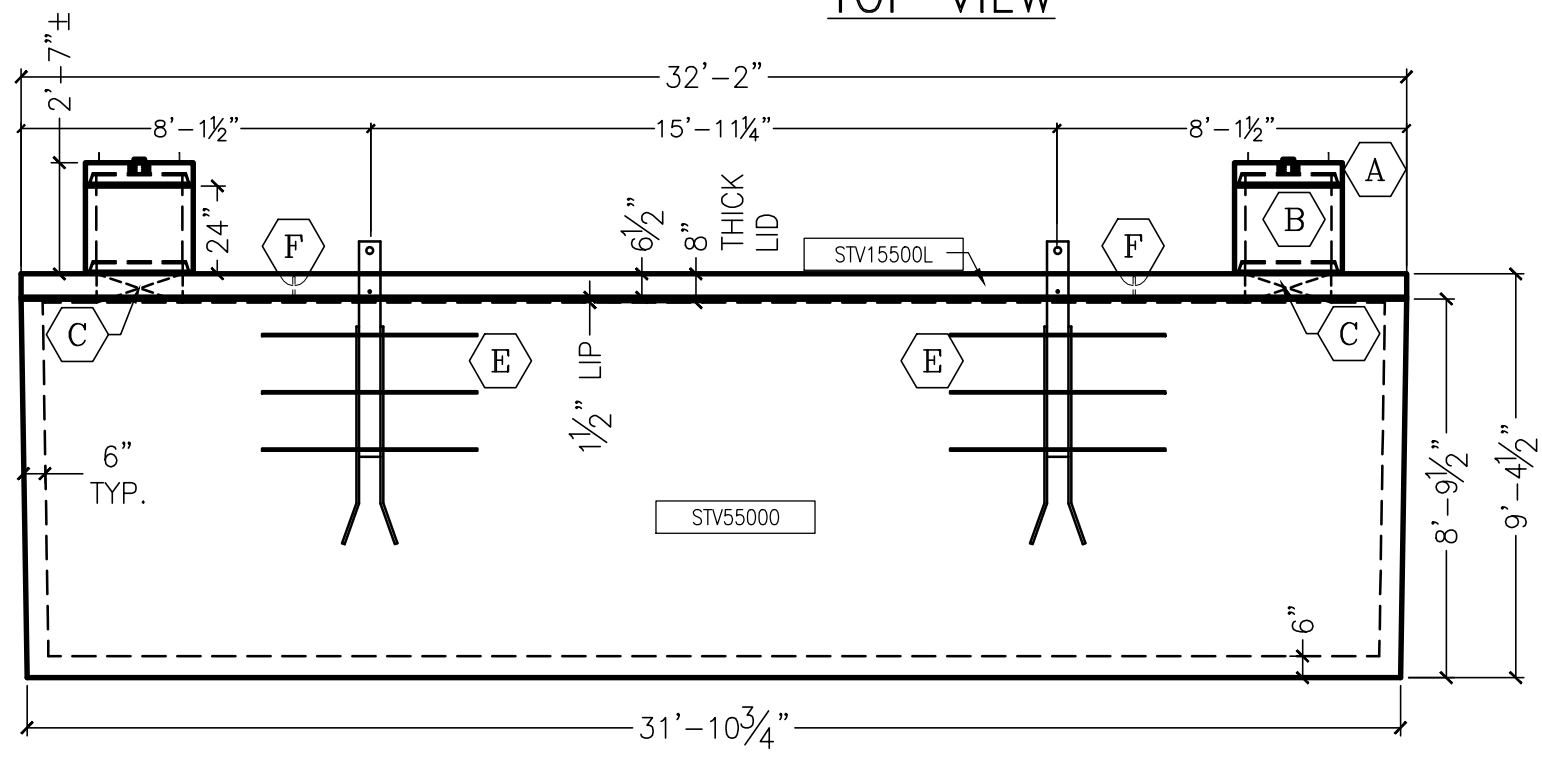


LID TO BE NOTCHED AT VAULT LIFT LOCATIONS, VERIFY PRIOR TO CASTING LID

TOP VIEW

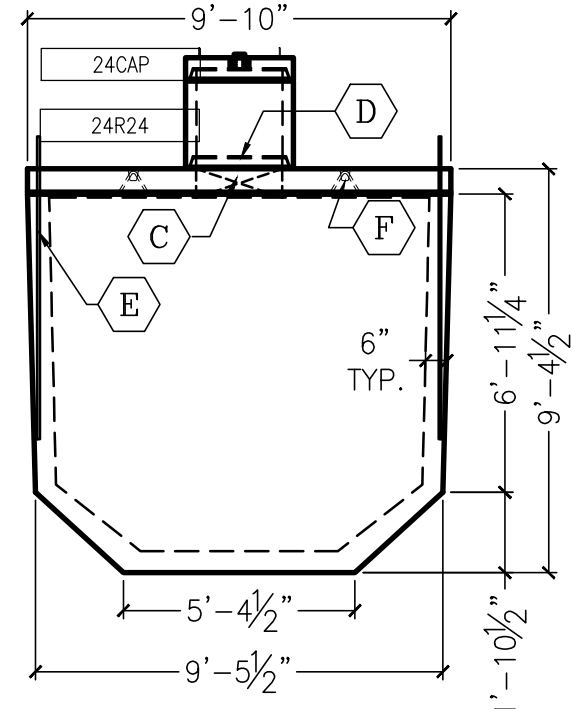


SIDE VIEW

PART NO.	DESCRIPTION	QTY.
ANCHU8	8-TON UTILITY ANCHOR #8UA671	8
LIFTFB	3/4" X 6" FLAT BAR LIFT	4
CIA1161CWAS	D&L A-1161 COVER "WATER" SB APH	1
CIA1043RC	6" x 24"Ø COATED CAST IRON RING ONLY	1

- A 6"H CAP LID WITH 6" PVC SCREW ON FILLER CAP
- B 24"Ø RISER MATERIAL, HEIGHT AS REQUIRED
- C 24"Ø BLOCKOUT IN VAULT LID
- D HEADER CAST ONTO TOP OF LID FOR 24" RISER
- E 3/4" THICK X 6" WIDE FLAT PLATE LIFT EXTENDS 16" UP FROM TOP OF VAULT WALL
- F 8-TON UTILITY ANCHOR #8UA671 CAST INTO TOP OF LID

PRODUCTION	ISSUED
PLANT SUPER	
REBAR	
WELDING	
BLDG 2	
BLDG 3	
BLDG 4	
EAST PAD	
QC	
FORKLIFT	
DISPATCH	
CM	
DATE:	



END VIEW

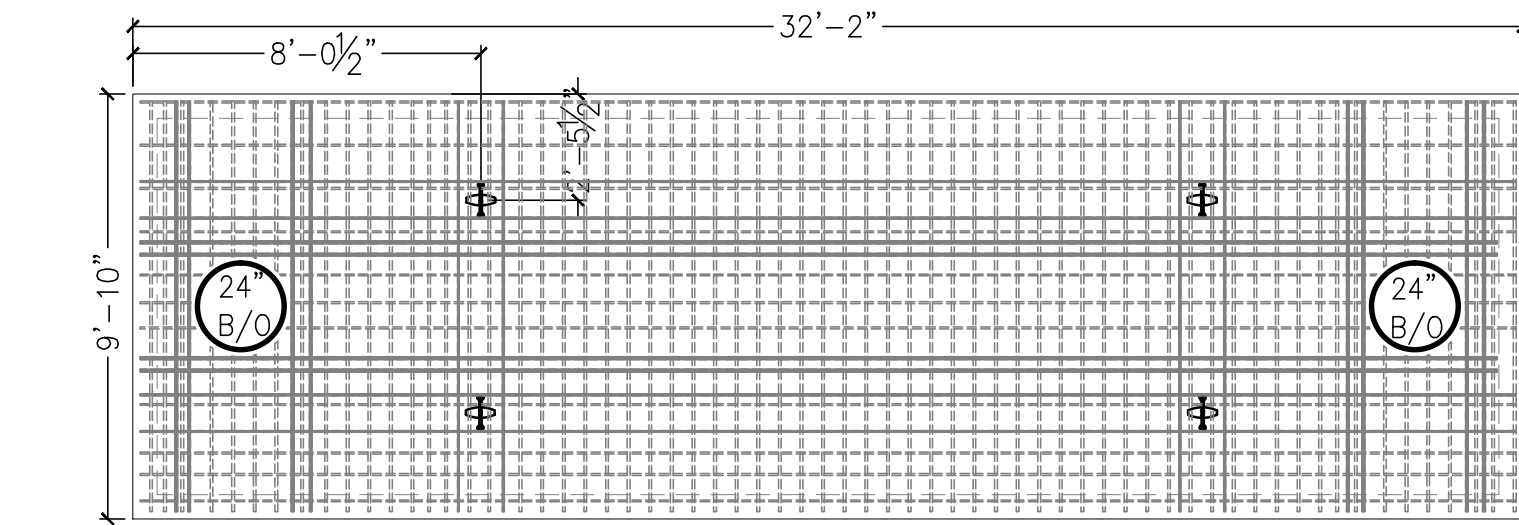
	WEIGHT/CONCRETE	
LID	30,233 LBS	7.47 CY
VAULT	68,072 LBS	16.81 CY
TOTAL	98,306 LBS	24.27 CY

15,500 GAL STORAGE VAULT

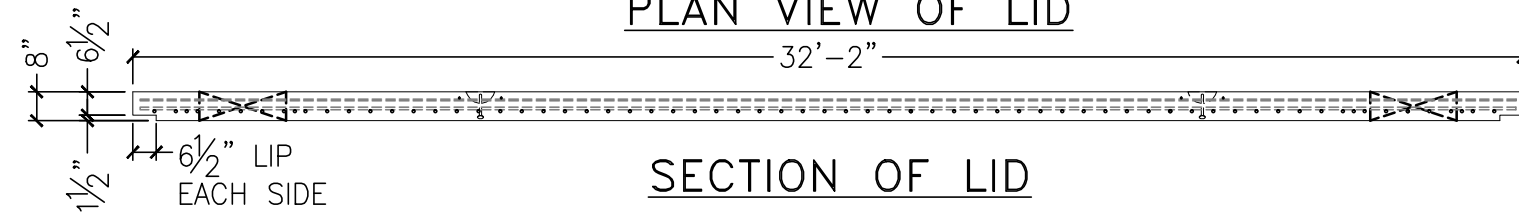
ITEM NAME:

COLORADO PRECAST CONCRETE, Inc.  
 1820 E. HIGHWAY 402., LOVELAND, CO 80537  
 (970) 669-0535 FAX (970) 669-0674  
 www.coloprecast.com

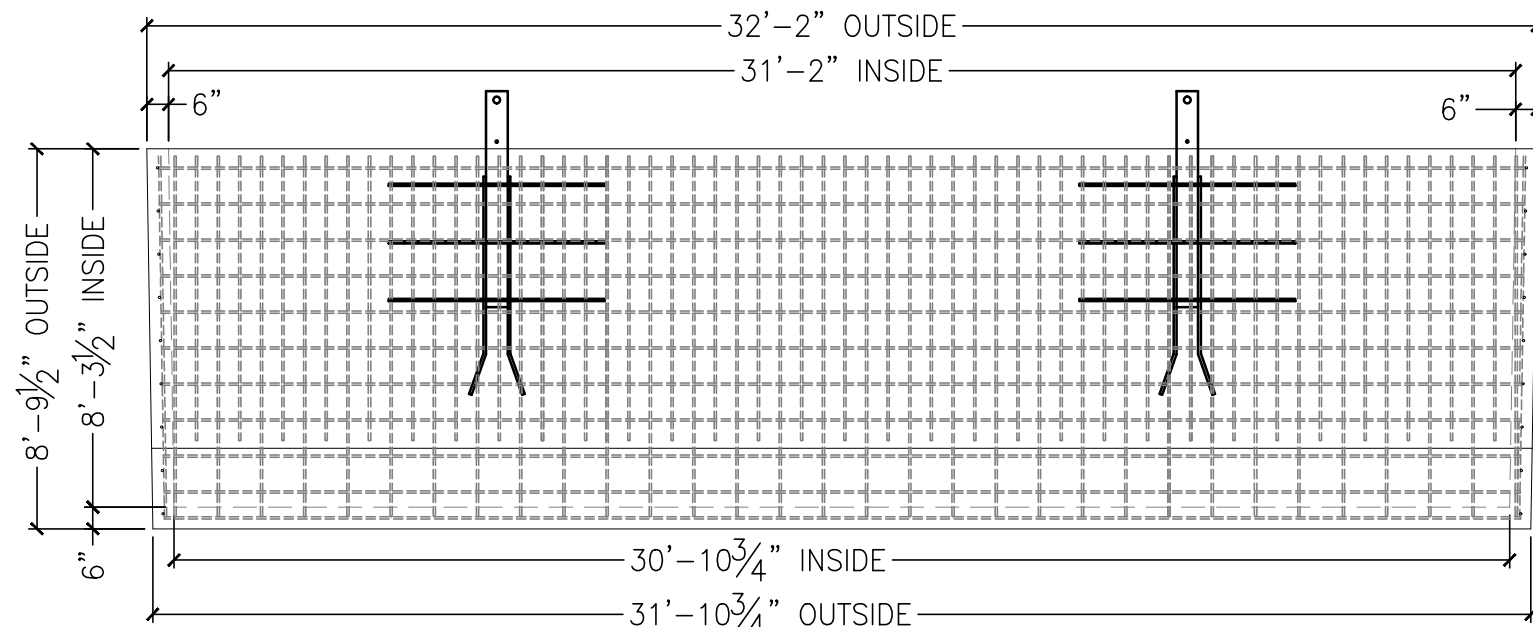




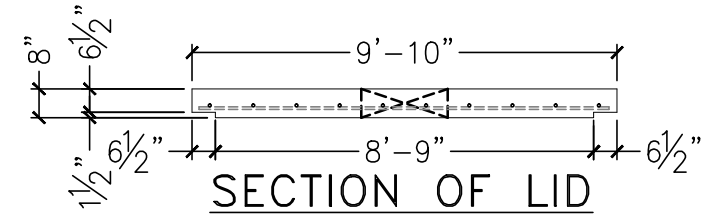
PLAN VIEW OF LID



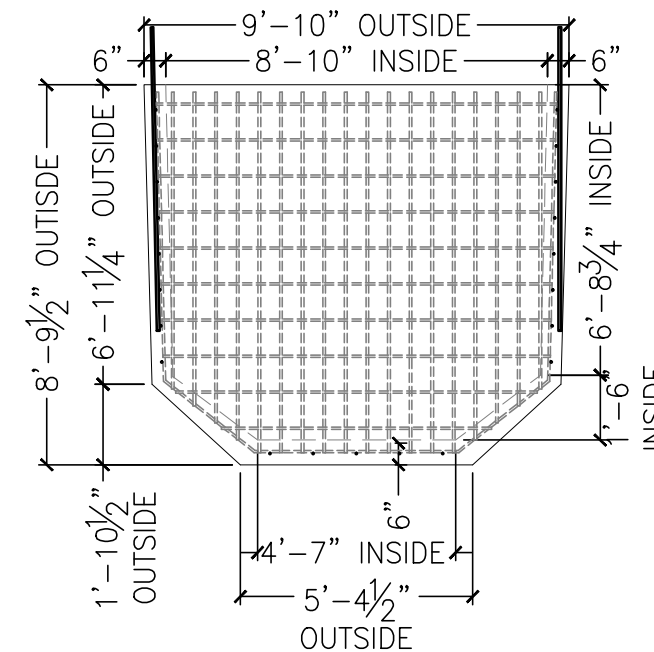
SECTION OF LID



SIDE VIEW OF VAULT



SECTION OF LID



END VIEW OF VAULT

**LID REINFORCEMENT:**

LID TO BE 8" THICK  
 SHORT BAR: #6 REBAR @ 6" O.C., 2 1/2"  
 OFF BOTTOM OF LID  
 LONG BAR" #6 REBAR @ 12" O.C. ON  
 TOP OF SHORT BAR  
 (2) ADD'L #6 REBAR EACH SIDE OF  
 OPENINGS AS SHOWN.  
 (1) ADD'L #4 REBAR EACH SIDE OF  
 LIFTS, 1 1/2" OFF TOP OF LID, AS  
 SHOWN.

|| = ADD'L BAR AS DESCRIBED ABOVE

**LONG WALLS:**

VERTICAL BARS: #5 @ 6" O.C. 1 1/2"  
 OFF INSIDE WALL, INCLUDES #5  
 U-BAR @ 12" O.C. EXTENDING UP  
 INTO WALL, AND (1) ADDITIONAL #5  
 BAR @ 6" BETWEEN ALL U-BAR

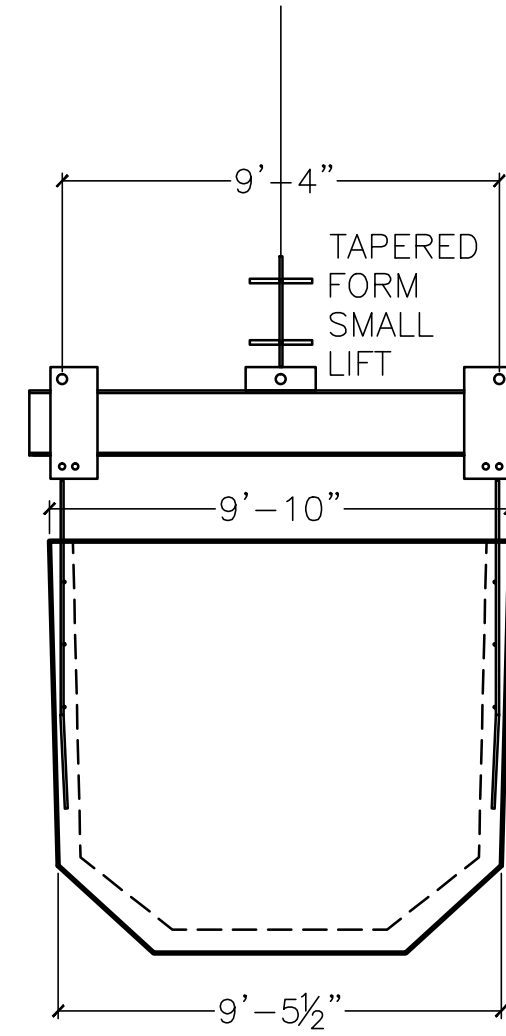
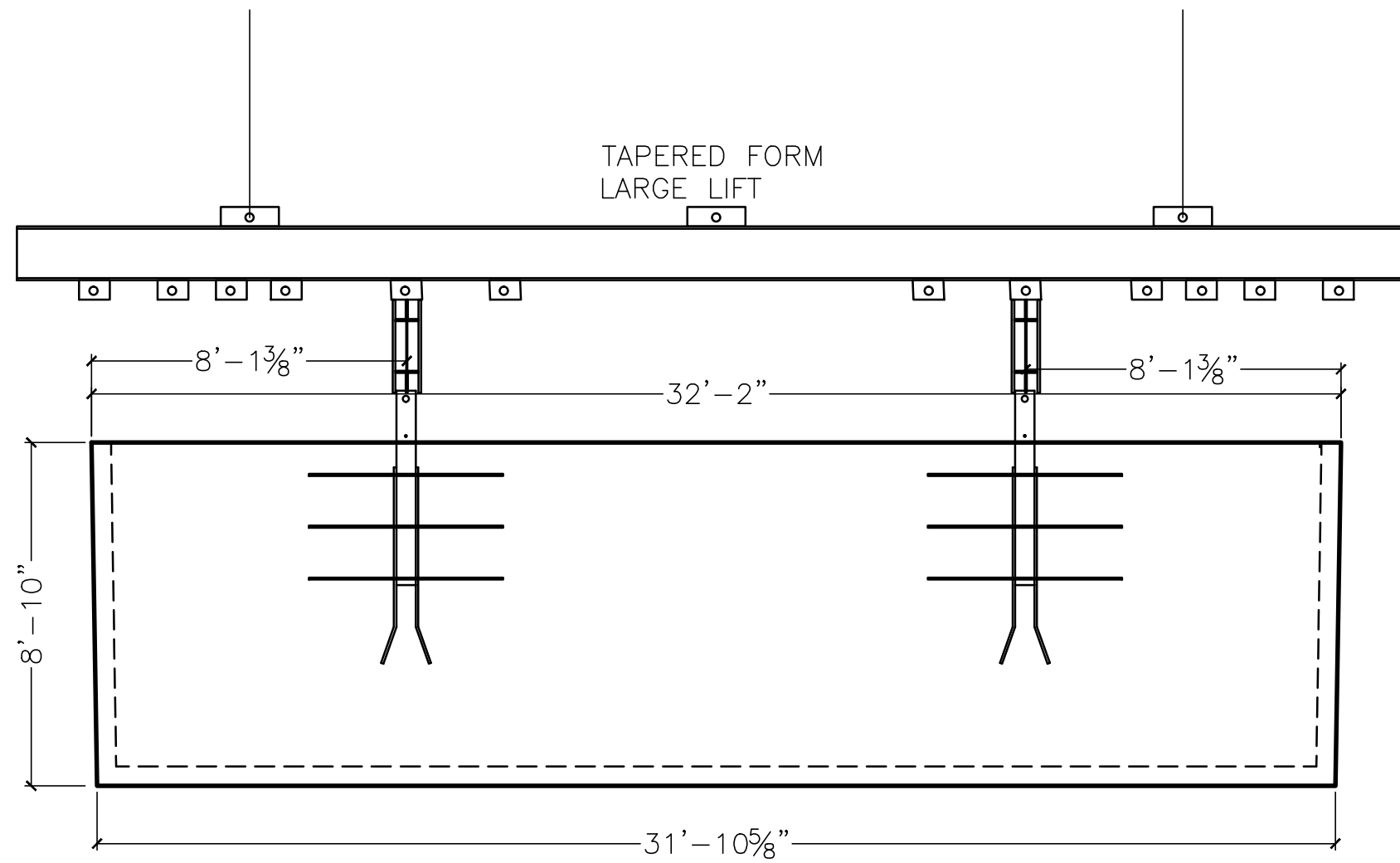
HORIZONTAL BARS: #5 BAR @ 10"  
 O.C. WELDED TO THE OUTSIDE OF  
 VERTICAL BARS

**FLOOR:**

#5 U-BAR @ 12" O.C. 1 1/2" OFF TOP  
 OF FLOOR, EXTENDING UP INTO WALLS  
 #5 REBAR AT 12" O.C. LENGTHWISE

**END WALLS:**

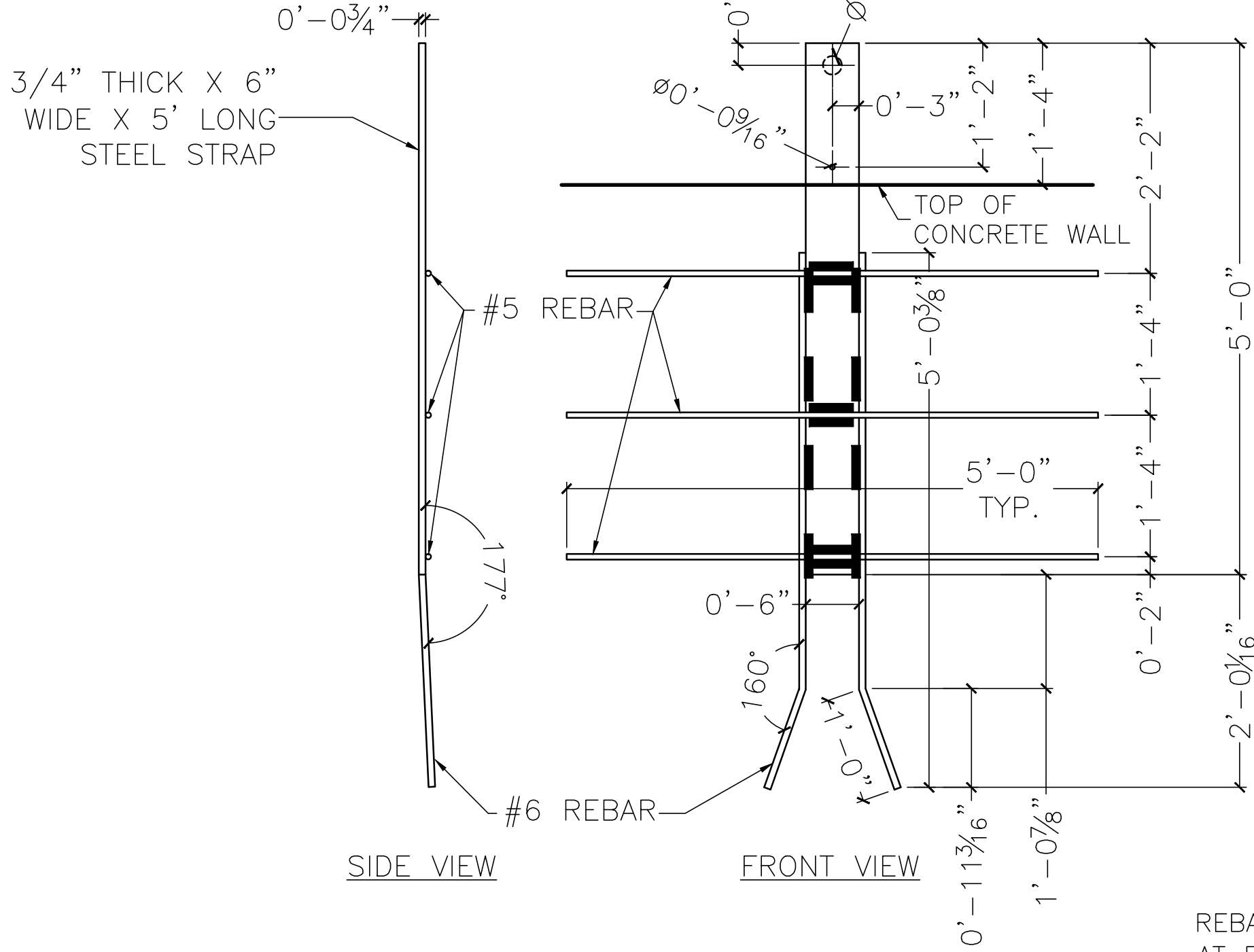
VERTICAL BARS: #6 BAR @ 6" O.C.,  
 1 1/2" OFF INSIDE OF WALL  
 HORIZONTAL BARS: #5 BAR @ 10"  
 O.C., WELDED TO THE OUTSIDE OF  
 VERTICAL BARS.



WEIGHT/CONCRETE  
 VAULT 68,072 LBS 16.81 CY

RIGGING VERIFIED BY:

USE LARGE TAPERED FORM SPREADER BAR AT 15'-11 3/4" HOLES WITH (2) SMALL TAPERED FORM SPREADER BARS WITH CLEVIS DIRECTLY TO FLAT PLATE LIFT IN TOP OF TANK WALL \*\*TO BE VERIFIED BY CRANE OPERATOR PRIOR TO LIFTING\*\*



TANK LIFT DETAIL  
LIFT TO BE TIED TO TANK CAGE

REBAR TO FLATBAR CONNECTION STARTING AT BOTTOM OF FLATBAR 5" FILLET WELDS WITH 5" OF SPACE BETWEEN EACH WELD

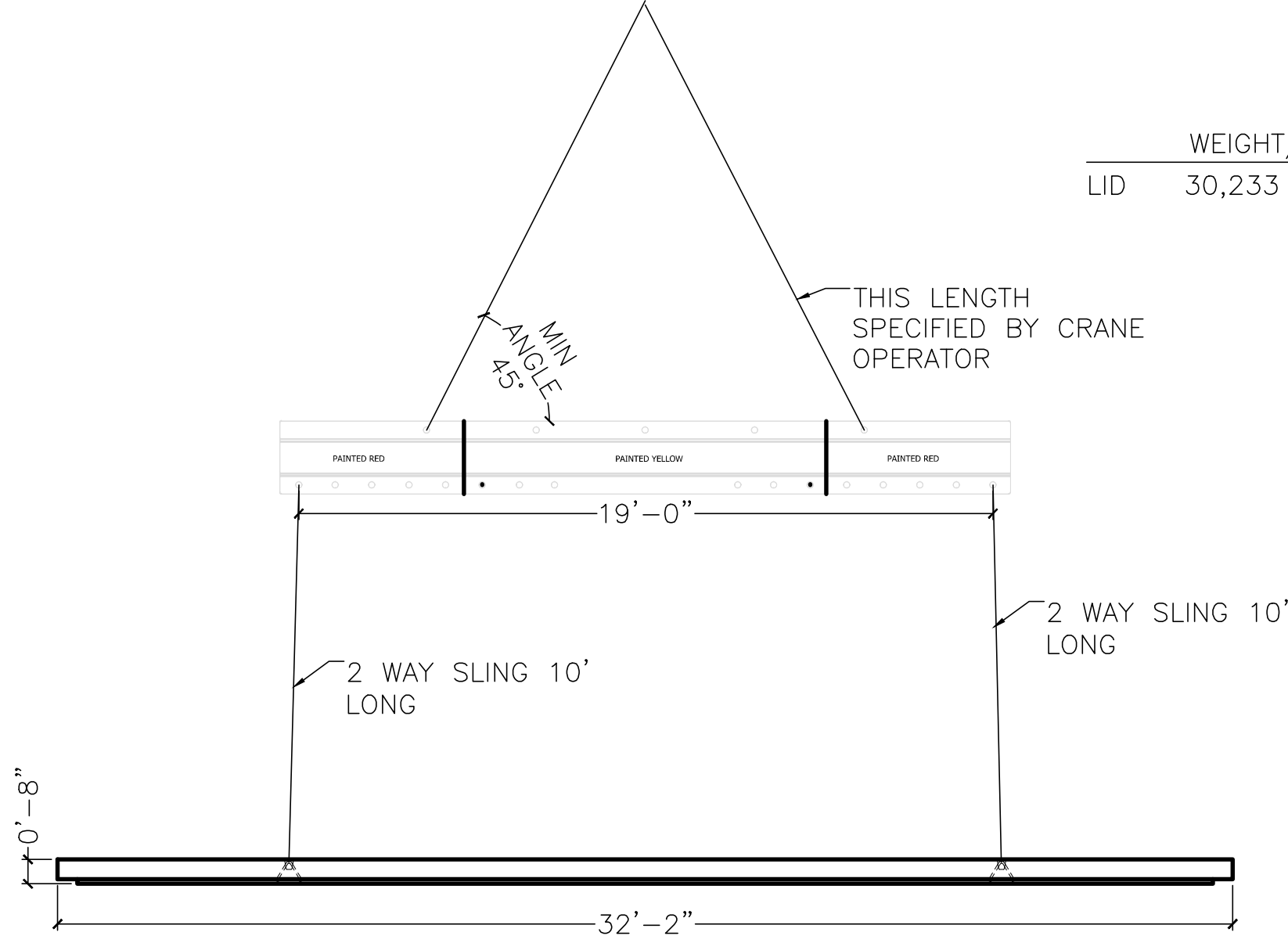
█ INDICATES FULL FILLET WELD

ITEM NAME	LID	VAULT
POUR DATE		
SCHEDULED DATE		
REINFORCEMENT	DATE	QC DATE
MIX#		
LIFTS		
BLOCKOUTS		
GASKETS		
FORM OIL		
DIMENSIONS		
STEPS		
BLOCKOUTS		
GASKETS		
DIMENSIONS		
STEPS		
LIFTS		
BLOCKOUTS		
GASKETS		
COATING		
DIMENSIONS		
ANTICIP. SHIP DATE:		

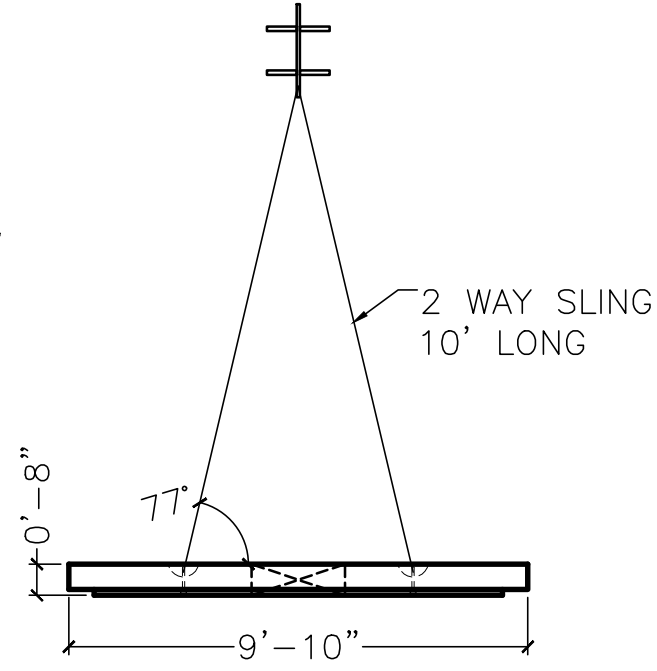
PRE POUR

POST POUR

FINAL



	WEIGHT/CONCRETE	
LID	30,233 LBS	7.47 CY



RIGGING VERIFIED BY:

USE YELLOW/RED SPREADER BAR AT 19' HOLES WITH (2) 2 WAY SLINGS MIN 10' LONG  
 \*\*TO BE VERIFIED BY CRANE OPERATOR PRIOR TO LIFTING\*\*

08/08/12

COLORADO PRECAST CONCRETE, Inc.

1820 E. HIGHWAY 402., LOVELAND, CO 80537

(970) 669-0535 FAX (970) 669-0674

www.coloprecast.com



ITEM NAME:

15,500 GAL STORAGE VAULT LID

LIFTING DIAGRAM

5 OF 5