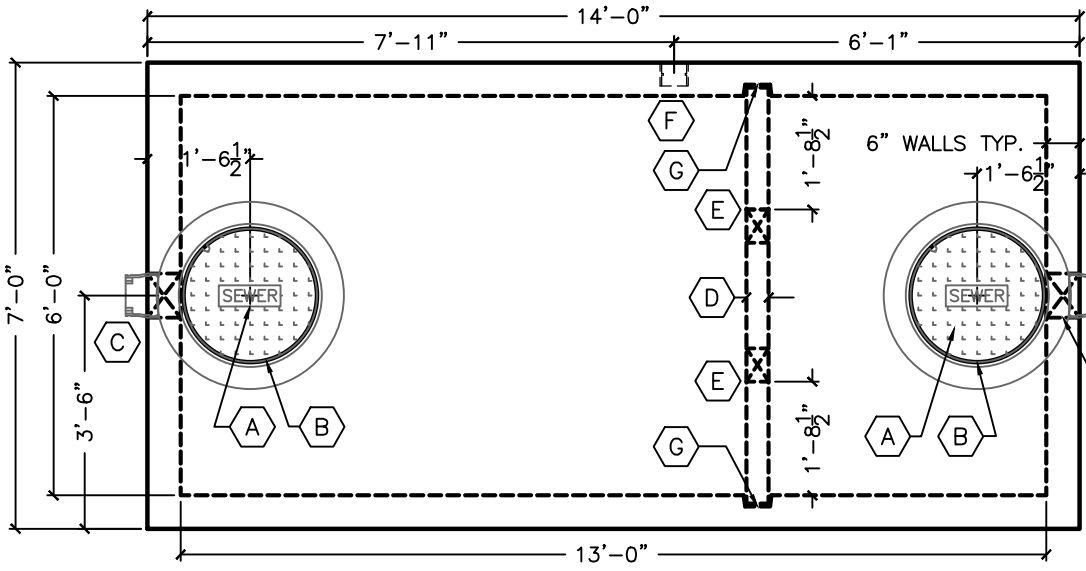


PART NO.	DESCRIPTION	QTY.
KOR02	KOR-N-SEAL S106-8SWP (4.2-5.5-6.4)	2
4PVC40C	4" SCH 40 COUPLING	1
RUB15ROLL	1 1/2" BUTYL MASTIC SEALANT ROLL	4
ANCHU4	4-TON UTILITY ANCHOR #6UA444	8
LIFTWRLL14	1/4"x8 1/2" GALV. WIRE ROPE LIFT	2
CIA1043RC	D&L A-1043 RING	2
CIA1161CSSAS	D&L A-1161 COVER STAMPED "SEWER"	2

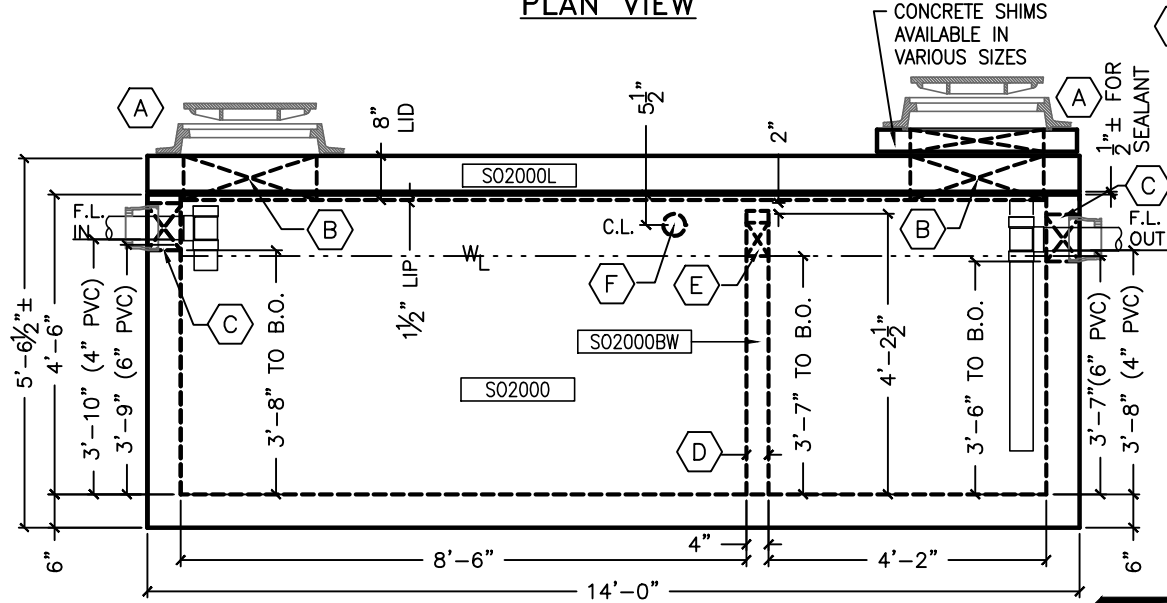
PRODUCTION	ISSUED
PLANT SUPER	
REBAR	
WELDING	
BLDG 2	
BLDG 3	
BLDG 4	
EAST PAD	
QC	
FORKLIFT	
DISPATCH	
CM	
DATE:	

	4" PVC	6" PVC
ACTUAL CAPACITY	2084 GAL	2037 GAL



**PLAN VIEW**

- (A) D&L A-1043 24"Ø CAST IRON RING & A-1161 COVER STAMPED "SEWER"
- (B) 24"Ø BLOCKOUT IN LID
- (C) 8"Ø B/O FOR KOR-N-SEAL S106-8SWP (4.2"-6.4" OD) GASKET FOR 4" OR 6" PVC
- (D) 4" THICK BAFFLE WALL
- (E) 6"x6" BLOCKOUT
- (F) 4"Ø SCH 40 PVC COUPLING CAST INTO VAULT WALL, COUPLER TO OUTSIDE FACE
- (G) NOTCH FOR BAFFLE ON INSIDE FACE OF VAULT WALL



**SIDE VIEW**

LOAD RATINGS:  
AASHTO HS20-44 RATED TO 2'-6" MAXIMUM BURY

DESIGN PROPERTIES:  
CONCRETE STRENGTH: 7,000 PSI  
CONCRETE WEIGHT: 150 PCF  
STEEL STRENGTH: 60,000 PSI (GRADE 60)

DESIGN MANUALS  
ACI 318-08  
AISC LRFD 13th EDITION  
AASHTO 17th EDITION 2002

- SECONDARY COMPARTMENT HAS VOLUME EQUAL TO APPROXIMATELY 1/3 OF TOTAL CAPACITY.
- (2) S106-8SWP KOR-N-SEAL BOOTS FURNISHED BY COLORADO PRECAST CONCRETE (C.P.C.).
- JOINT BETWEEN LID AND VAULT TO BE SEALED WITH 1 ROW 1-1/2" BUTYL MASTIC SEALANT PROVIDED BY C.P.C.
- BAFFLE WALL TO BE A SEPARATE POUR AND INSTALLED BY C.P.C. BEFORE DELIVERY.
- ALL PIPES AND FITTINGS TO BE PROVIDED BY OTHERS.

	WEIGHT/CONCRETE	
LID	8,789 LBS	2.17 CY
BAFFLE	1,296 LBS	0.32 CY
VAULT	20,777 LBS	5.13 CY
TOTAL	30,861 LBS	7.61 CY

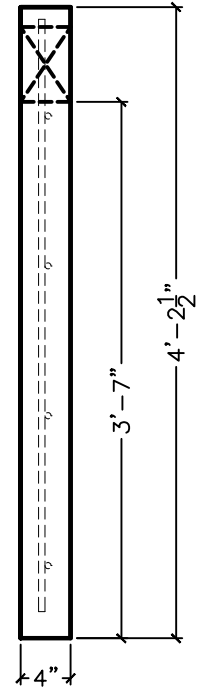
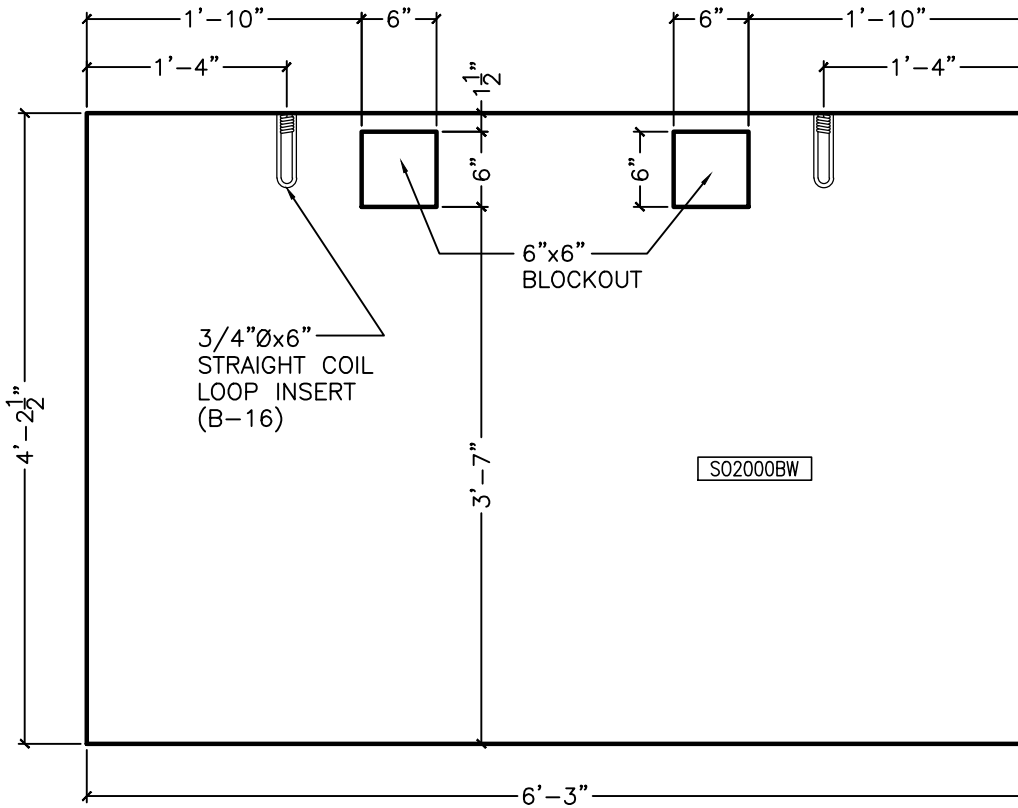
**NOTE:**  
IT IS THE RESPONSIBILITY OF THE CONTRACTOR TO VERIFY ALL DIMENSIONS AND SPECIFICATIONS

APPROVED BY \_\_\_\_\_ DATE \_\_\_\_\_

**COLORADO PRECAST CONCRETE, Inc.**  
1820 E. HIGHWAY 402, LOVELAND, CO 80537  
(970) 669-0535 FAX (970) 669-0674  
www.coloprecast.com



ITEM NAME:  
**2000 GALLON SAND & OIL INTERCEPTOR**



SECTION VIEW

BAFFLE IS A SEPARATE  
POUR THAN VAULT

REINFORCEMENT:  
#4 REBAR @ 12" O.C.E.W.,  
CENTERED

WEIGHT/CONCRETE:  
1,302 LBS/0.32 CY

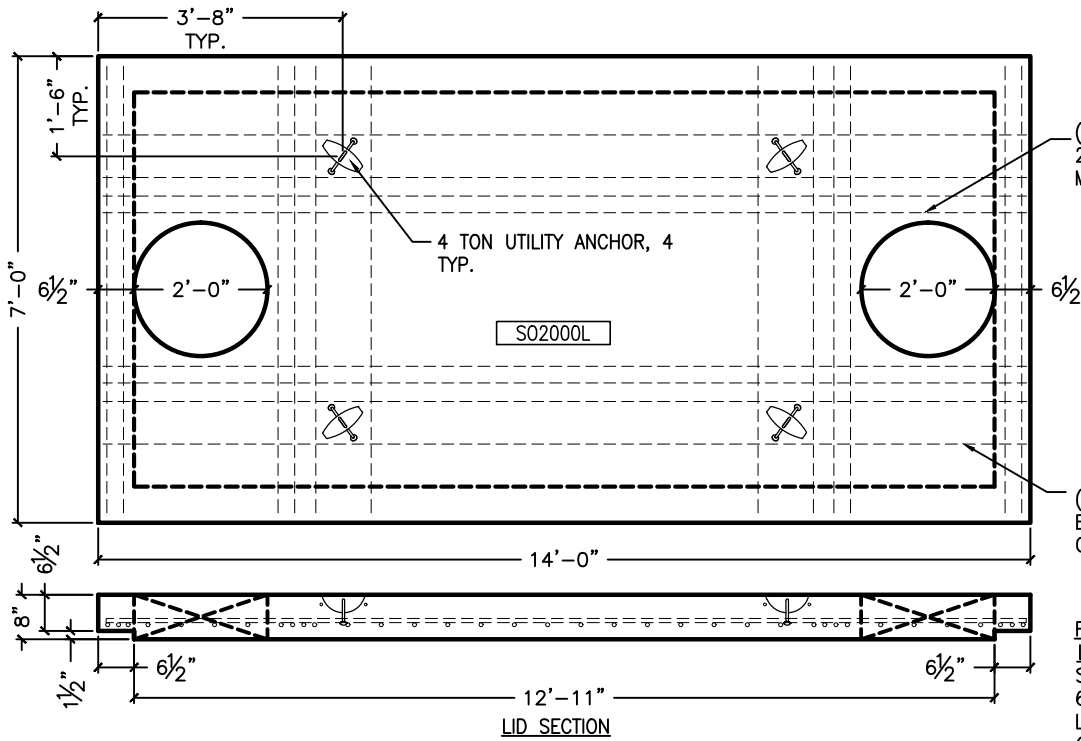
	ITEM NAME		WALLS/FLOOR		LID		BAFFLE	
	DATE	QC	DATE	QC	DATE	QC	DATE	QC
PRE POUR	POUR DATE							
	SCHEDULED DATE							
	REINFORCEMENT							
	MIX#							
	LIFTS							
	BLOCKOUTS							
	GASKETS							
POST POUR	FORM OIL							
	DIMENSIONS							
	STEPS							
	BLOCKOUTS							
FINAL	GASKETS							
	DIMENSIONS							
	STEPS							
	LIFTS							
	BLOCKOUTS							

05/24/10

COLORADO PRECAST CONCRETE, Inc.  
1820 E. HIGHWAY 402, LOVELAND, CO 80537  
(970) 669-0535 FAX (970) 669-0674  
www.coloprecast.com



ITEM NAME:  
**2000 GALLON SAND & OIL INTERCEPTOR  
BAFFLE DETAILS**



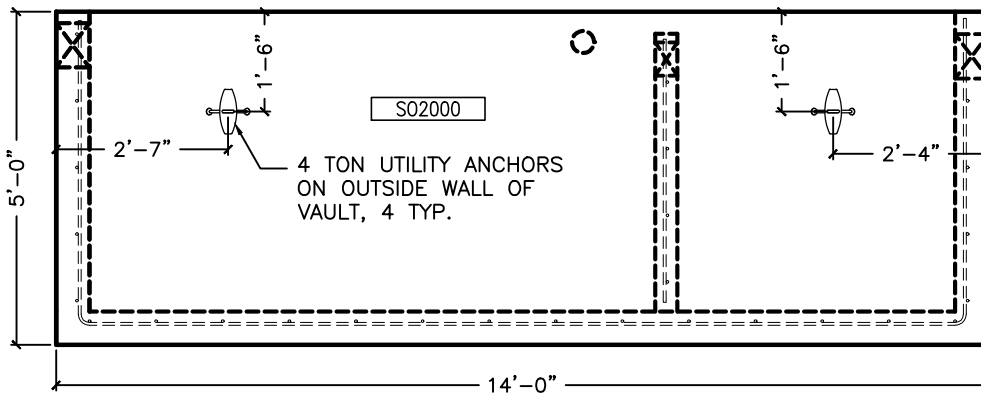
LID DETAILS

(2) ADD'L #6 REBAR AROUND 24"Ø ACCESS HOLES ON BOTTOM MAT

(1) ADD'L #6 REBAR EACH SIDE OF LIFTS 1 1/2" OFF TOP OF LID

REINFORCEMENT:

LID:  
 SHORT BARS: #6 REBAR @ 6" O.C., 2-1/4" OFF BOTTOM.  
 LONG BARS: #4 REBAR @ 12" O.C. ON TOP OF SHORT BARS  
 (2) ADD'L #6 REBAR EACH SIDE OF ACCESS HOLES



VAULT LIFT DETAIL

WALLS:

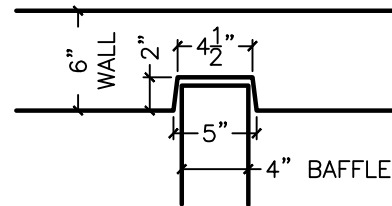
VERTICAL:  
 #4 U-BAR AT 12" O.C., 1-1/2" OFF INSIDE OF WALL  
 HORIZONTAL:  
 #4 U-BAR @ 12" O.C., OUTSIDE OF VERTICAL BAR

BAFFLE:

#4 REBAR @ 12" O.C.E.W., CENTERED

FLOOR:

#4 U-BAR AT 12" O.C.E.W., SHORT BARS @ 1-1/2" OFF TOP OF FLOOR, LONG BARS BELOW SHORT BARS  
 U-BARS EXTEND INTO WALLS



NOTCH DETAIL

05/24/10

COLORADO PRECAST CONCRETE, Inc.  
 1820 E. HIGHWAY 402, LOVELAND, CO 80537  
 (970) 669-0535 FAX (970) 669-0674  
 www.coloprecast.com



ITEM NAME:

2000 GALLON SAND & OIL INTERCEPTOR  
 DETAILS