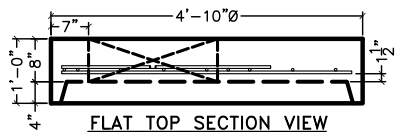


PLAN VIEW

PER ASTM C478-12 SECTION 6.3 - NO ADDITIONAL REINFORCEMENT IS REQUIRED FOR BLOCKOUTS OR LIFT HOLES

ASTM C-478
AASHTO HS-20 W/IMPACT
UP TO 3' BURY ON FLAT TOP

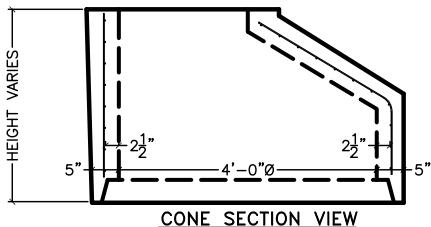
8" THICK FLOOR FOR DEPTHS UP TO 9FT
8" THICK FLOOR FOR DEPTHS FROM 9FT - 19FT
12" THICK FLOOR FOR DEPTHS FROM 19FT - 30 FT
CONCRETE STRENGTH = 4,000 PSI
CONCRETE WT = 150 PCF
STEEL STRENGTH = 60,000 PSI
GRADE 60 A706



FLAT TOP SECTION VIEW

REINFORCEMENT:

#6 REBAR @ 8" O.C.E.W., 1 1/2" OFF BOTTOM, 2" CLR OF OPENING AND 2" CLR OF EDGE
(1) EXTRA #6 REBAR IN MAT EACH SIDE OF OPENING
(2) #4 DIAGONAL REBAR EACH SIDE OF OPENING, ABOVE MAT, 2" CLEAR OF OPENING

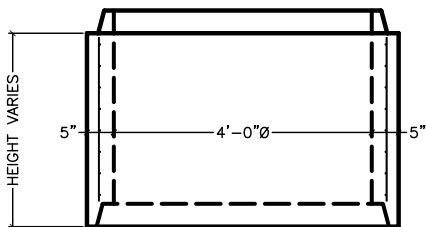


CONE SECTION VIEW

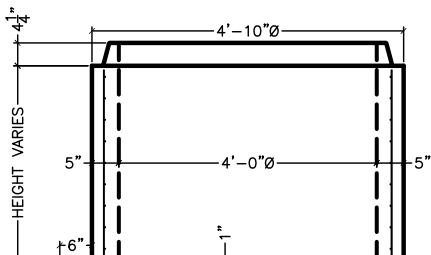
RISER/CONE REINFORCEMENT:

WALLS:
4X8 0.226/0.164 WWF CENTERED IN WALL

TOLERANCE FOR LOCATION OF REINFORCEMENT IS MIDDLE 1/3 OF THE WALL PER ASTM C478-12



RISER SECTION VIEW



BASE 6" FLOOR-SIDE VIEW

BASE REINFORCEMENT:

WALLS:
4X8 0.226/0.164 WWF CENTERED IN WALL

6" FLOOR:

#4 REBAR @ 8" O.C.E.W., 1" OFF TOP OF FLOOR, 2" CLR OF EDGE

8" FLOOR:

#4 REBAR @ 8" O.C.E.W., 1 1/4" OFF TOP OF FLOOR, 2" CLR OF EDGE

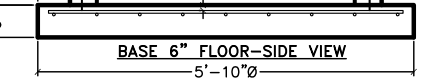
12" FLOOR: 2 MATS

UPPER MAT:

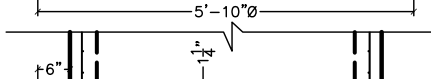
#4 REBAR @ 8" O.C.E.W., 1 1/4" OFF TOP OF FLOOR, 2" CLR OF EDGE

LOWER MAT:

#4 REBAR @ 12" O.C.E.W., 1 1/2" OFF BOTTOM OF FLOOR



BASE 8" FLOOR-SIDE VIEW



BASE 12" FLOOR-SIDE VIEW