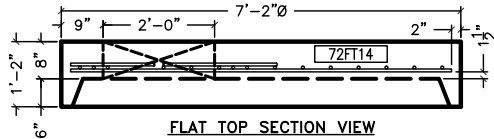


PER ASTM C478-12 SECTION 6.3 - NO ADDITIONAL REINFORCEMENT IS REQUIRED FOR BLOCKOUTS OR LIFT HOLES

ASTM C-478
AASHTO HS-20 W/IMPACT
UP TO 1'-6" BURY ON FLAT TOP

8" THICK FLOOR FOR DEPTHS UP TO 18FT
12" THICK FLOOR FOR DEPTHS FROM 18FT - 30 FT
CONCRETE STRENGTH = 4,000 PSI
CONCRETE WT = 150 PCF
STEEL STRENGTH = 60,000 PSI
GRADE 60 A706



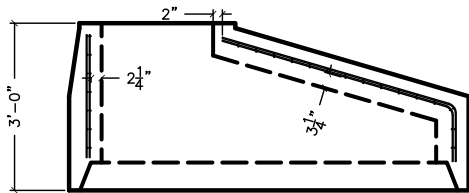
FLAT TOP SECTION VIEW

FLAT TOP REINFORCEMENT:

#6 REBAR @ 6" O.C.E.W., 1½" OFF BOTTOM OF SLAB

(2) #6 DIAGONALS @ 4" O.C. EACH SIDE OF OPENING, ABOVE LOWER MAT

ALL REBAR TO BE 2" CLEAR OF EDGES AND OPENING



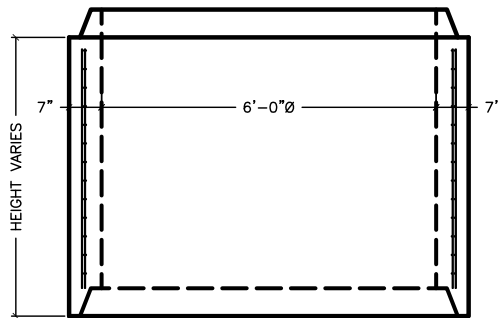
CONE SECTION VIEW

CONE/RISER WALLS:

(2) MATS OF 4X8 0.226/0.164 WELDED WIRE MESH CENTERED IN WALL, MAX OF ¼" SPACING BETWEEN (2) MATS

2" CLEAR OF ALL EDGES

TOLERANCE FOR LOCATION OF REINFORCEMENT IS MIDDLE ⅓ OF THE WALL PER ASTM C478-12



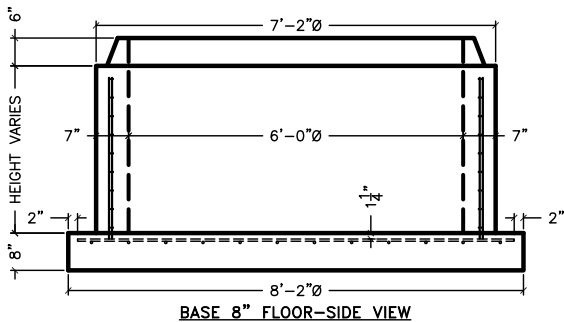
RISER SECTION VIEW

BASE WALLS:

(2) MATS OF 4X8 0.226/0.164 WELDED WIRE MESH CENTERED IN WALL, MAX OF ¼" SPACING BETWEEN (2) MATS

TOLERANCE FOR LOCATION OF REINFORCEMENT IS MIDDLE ⅓ OF THE WALL PER ASTM C478-12

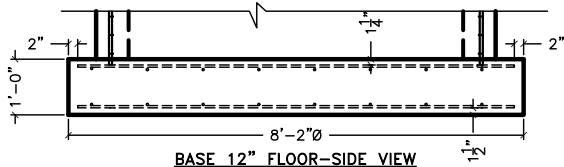
MESH IS TO EXTEND DOWN INTO FLOOR



BASE 8" FLOOR-SIDE VIEW

BASE 8" FLOOR:

#5 REBAR @ 8" O.C.E.W., 1¼" OFF TOP



BASE 12" FLOOR-SIDE VIEW

BASE 12" FLOOR:

TOP MAT: #5 REBAR @ 8" O.C.E.W., 1¼" OFF TOP
BOTTOM MAT: #4 REBAR @ 12" O.C.E.W., 1½" OFF BOTTOM

02/02/12

COLORADO PRECAST CONCRETE, Inc.
1820 E. HIGHWAY 402, LOVELAND, CO 80537
(970) 669-0535 FAX (970) 669-0674
www.coloprecast.com



ITEM NAME:

6'Ø MANHOLE
REINFORCEMENT