

PER ASTM C478-12 SECTION 6.3 - NO ADDITIONAL REINFORCEMENT IS REQUIRED FOR BLOCKOUTS OR LIFT HOLES

ASTM C-478
 AASHTO HS-20 W/IMPACT
 CONCRETE STRENGTH = 4,000 PSI
 CONCRETE WT = 150 PCF
 STEEL STRENGTH = 60,000 PSI
 GRADE 60 A706

FLAT TOP REINFORCEMENT:

TOP MAT:

#4 REBAR @ 12" O.C.E.W., 1 1/2" OFF TOP OF SLAB

(1) ADD'L #4 REBAR EACH SIDE OF OPENING AT 3" O.C. FROM NEXT BAR

(2) #4 DIAGONALS @ 4" O.C., EACH SIDE OF OPENING, BELOW UPPER MAT

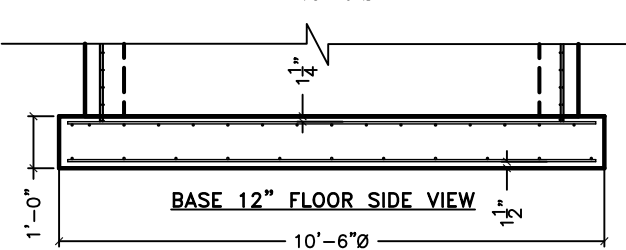
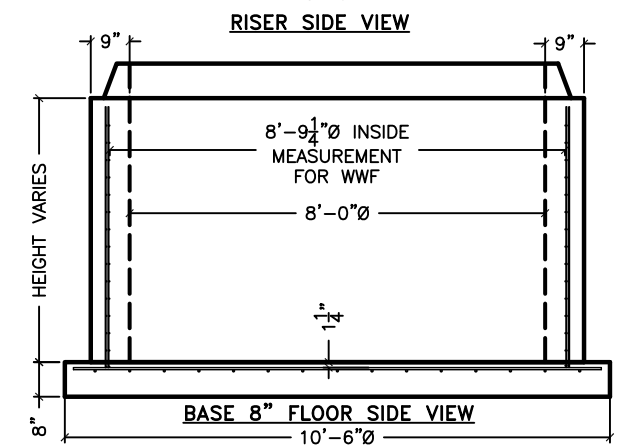
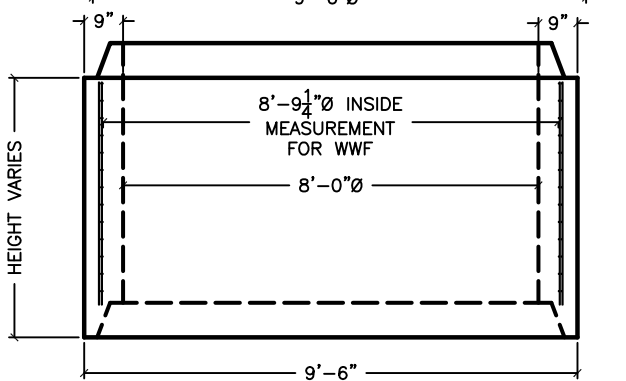
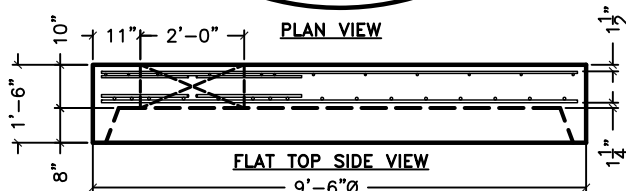
ALL REBAR TO BE 2" CLEAR OF EDGES AND OPENING

BOTTOM MAT:

#5 REBAR @ 4" O.C.E.W., 1 1/4" OFF BOTTOM OF SLAB

(2) #5 DIAGONALS @ 4" O.C. EACH SIDE OF OPENING, ABOVE LOWER MAT

ALL REBAR TO BE 2" CLEAR OF EDGES AND OPENING



WALLS:

(2) MATS OF 4X8 0.226/0.164 WELDED WIRE MESH CENTERED IN WALL, MAX OF 1/4" SPACING BETWEEN (2) MATS

2" CLEAR OF ALL EDGES

TOLERANCE FOR LOCATION OF REINFORCEMENT IS MIDDLE 1/3 OF THE WALL PER ASTM C478-12

BASE WALLS:

(2) MATS OF 4X8 0.226/0.164 WELDED WIRE MESH CENTERED IN WALL, MAX OF 1/4" SPACING BETWEEN (2) MATS

TOLERANCE FOR LOCATION OF REINFORCEMENT IS MIDDLE 1/3 OF THE WALL PER ASTM C478-12

MESH IS TO EXTEND DOWN INTO FLOOR

BASE 8" FLOOR:

#5 REBAR @ 7" O.C.E.W., 1 1/4" OFF TOP

BASE 12" FLOOR: 2 MATS

UPPER MAT: #5 REBAR @ 6" O.C.E.W., 1 1/4" OFF TOP

LOWER MAT: #4 REBAR @ 12" O.C.E.W., 1 1/2" OFF BOTTOM

8" THICK FLOOR IS USED FOR MANHOLE DEPTHS UP TO 10FT
 12" THICK FLOOR IS USED FOR MANHOLE DEPTHS FROM 10FT UP TO 25FT

02/02/12

COLORADO PRECAST CONCRETE, Inc.

1820 E. HIGHWAY 402, LOVELAND, CO 80537
 (970) 669-0535 FAX (970) 669-0674
 www.coloprecast.com



ITEM NAME:

8'Ø MANHOLES
 REINFORCEMENT

SHEET 1 OF 1